

Chapter 9 Troubleshooting

This chapter describes error contents which may occur during operating system, finding causes, and how to take action. For how to troubleshoot, tables that show Cnet communication errors is provided in 9.1, and the troubleshooting is performed according to each error code in 9.2.

9.1 Abnormal operations

Table 9.1 H/W and system error of communication module
(see Appendix A1-3, LED indication contents during abnormal operation)

Error code	Error indication	Error contents
C01-1	Error code values(1-6) of LED converted into hex value	H/W value
C01-2	Error code values(9-B) of LED converted into hex value	System

Table 9.2 Abnormal *function block* operation
(see Appendix A1-3, LED indication contents during abnormal operation)

Error code	Error indication	Error contents
C02	Error contact of <i>function block</i> becomes On, and status value is not 0.	<i>Function block</i> error becomes On. Or NDR of <i>function block</i> does not become 1.

Table 9.3 Error during receive monitor operation of frame editor

Error code	Error indication	Error contents
C03-01	[No received data] message occurs from the beginning during requesting receive monitor start.	Incorrect frame definition by using frame editor, or disagreement between <i>function block</i> and frame. Or incorrectly connected cable.
C03-02	Monitor data is not received during operating receive monitor.	Bad cable connection Disagreement of basic parameters between communication stations

Table 9.4 Error during receive monitor operation of frame editor

Error code	Error indication	Error contents
C04-01	[No received data] message occurs from the beginning during requesting receive monitor start.	Incorrect frame definition by using frame editor, or disagreement between <i>function block</i> and frame. Or incorrectly connected cable.(bad connection with communication module) CPU or communication module error occurs
C04-02	Monitor data is not received during operating transmission monitor.	<ul style="list-style-type: none"> • Bad cable connection • Disagreement of basic parameters between communication stations

9. Troubleshooting

Table 9.5 NAK transmission during dedicated mode communication

Error code	Error indication	Error contents
C05	NAK frame is sent as response to request frame of other station.(NAK LED(4,12) of Cnet module flashes)	<ul style="list-style-type: none">• Protocol disagreement of dedicated communication frame• Bad cable connection• Disagreement of basic parameters between communication stations

Table 9.6 No response during dedicated mode communication

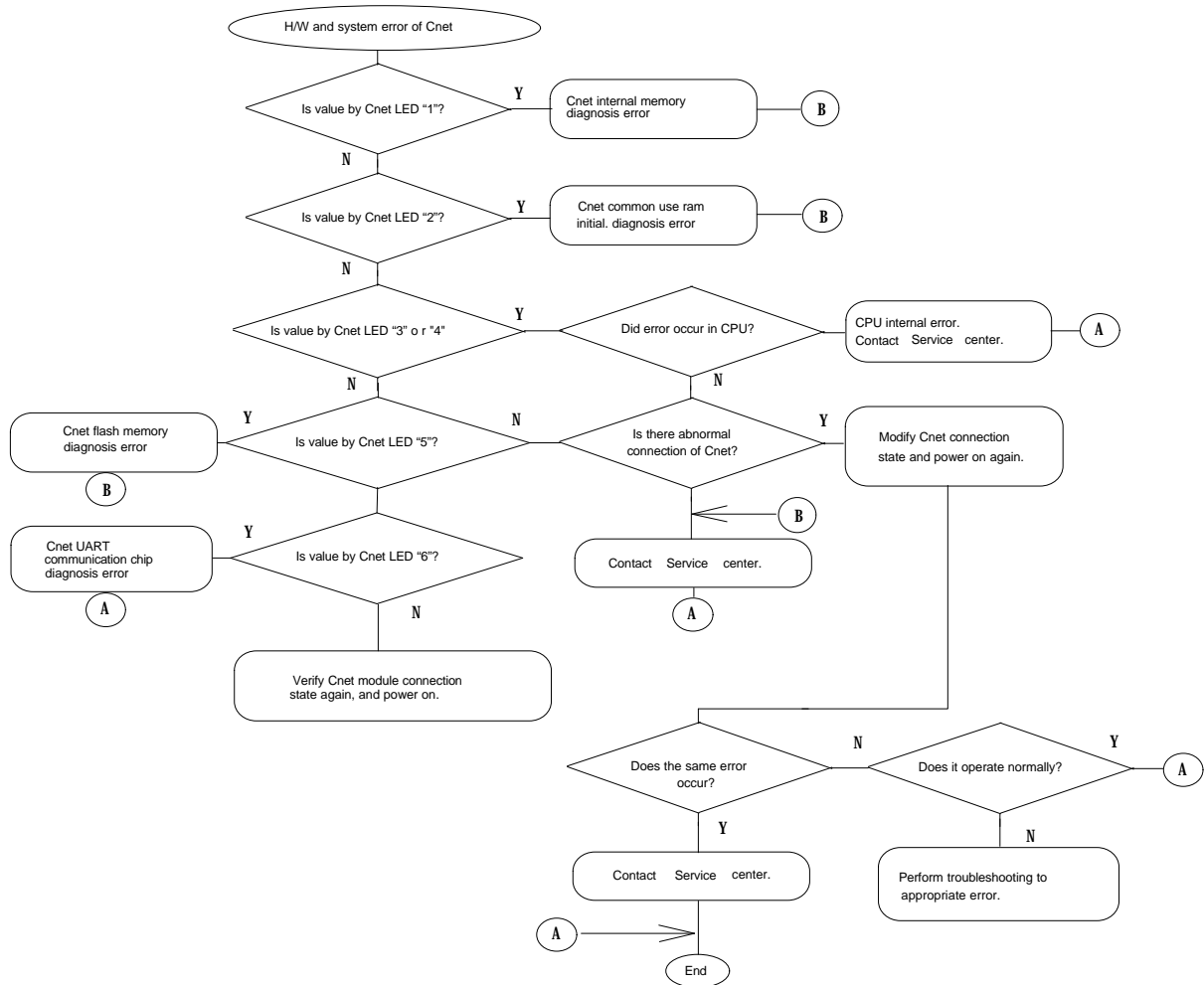
Error code	Error indication	Error contents
C06	No response is sent to request frame of other station.	<ul style="list-style-type: none">• Incorrectly specified station No. of frame editor• Bad cable connection

Table 9.7 Modem connection error during GMWIN communication mode

Error code	Error indication	Error contents
C07	Modem connection and initialization are not performed	<ul style="list-style-type: none">• Operation mode setting error of Cnet module.• Disagreement of initialization command of modem.• Bad connection of cable and telephone line.

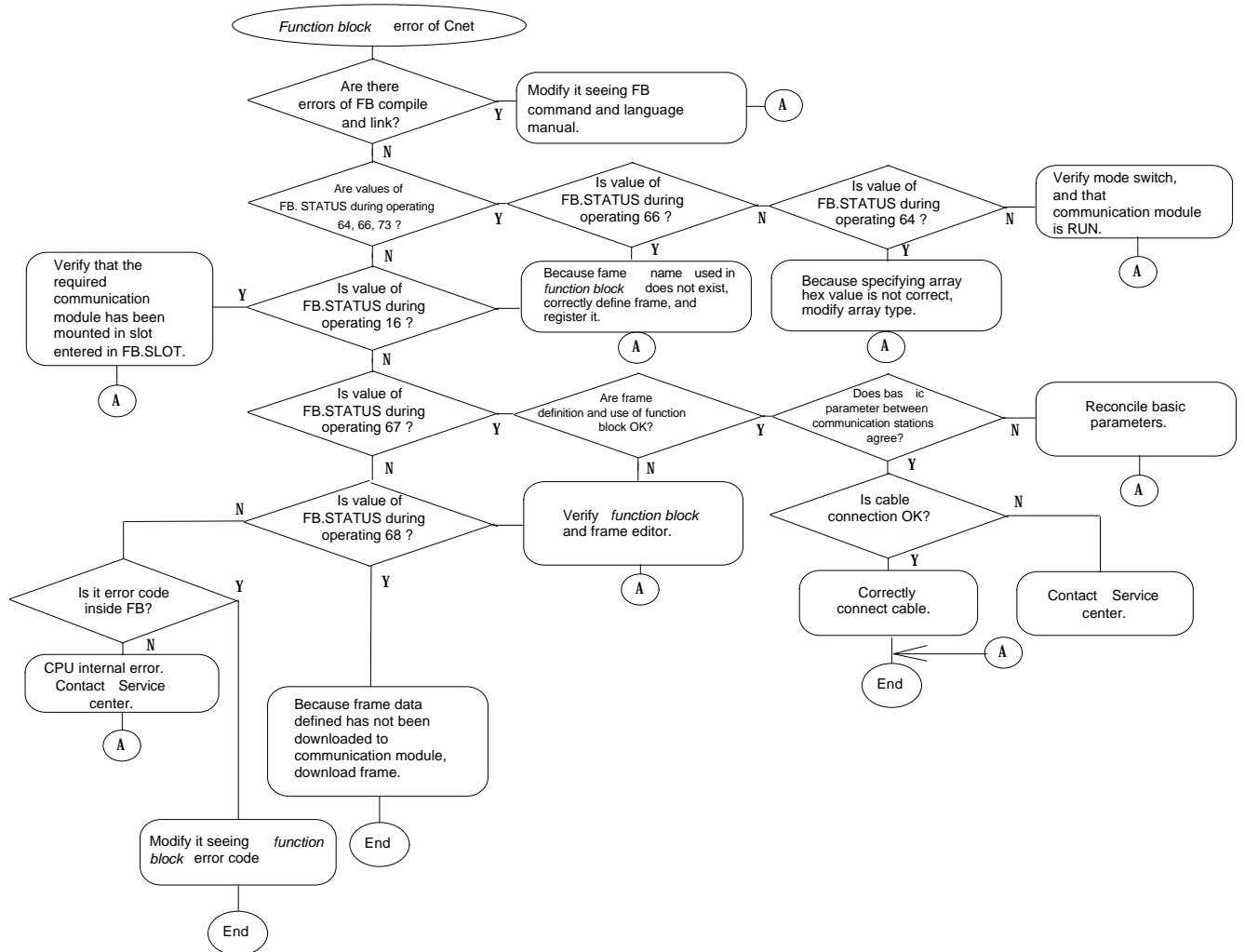
9.2 Troubleshooting by each error code

9.2.1 Error code C01-01 : H/W and system error

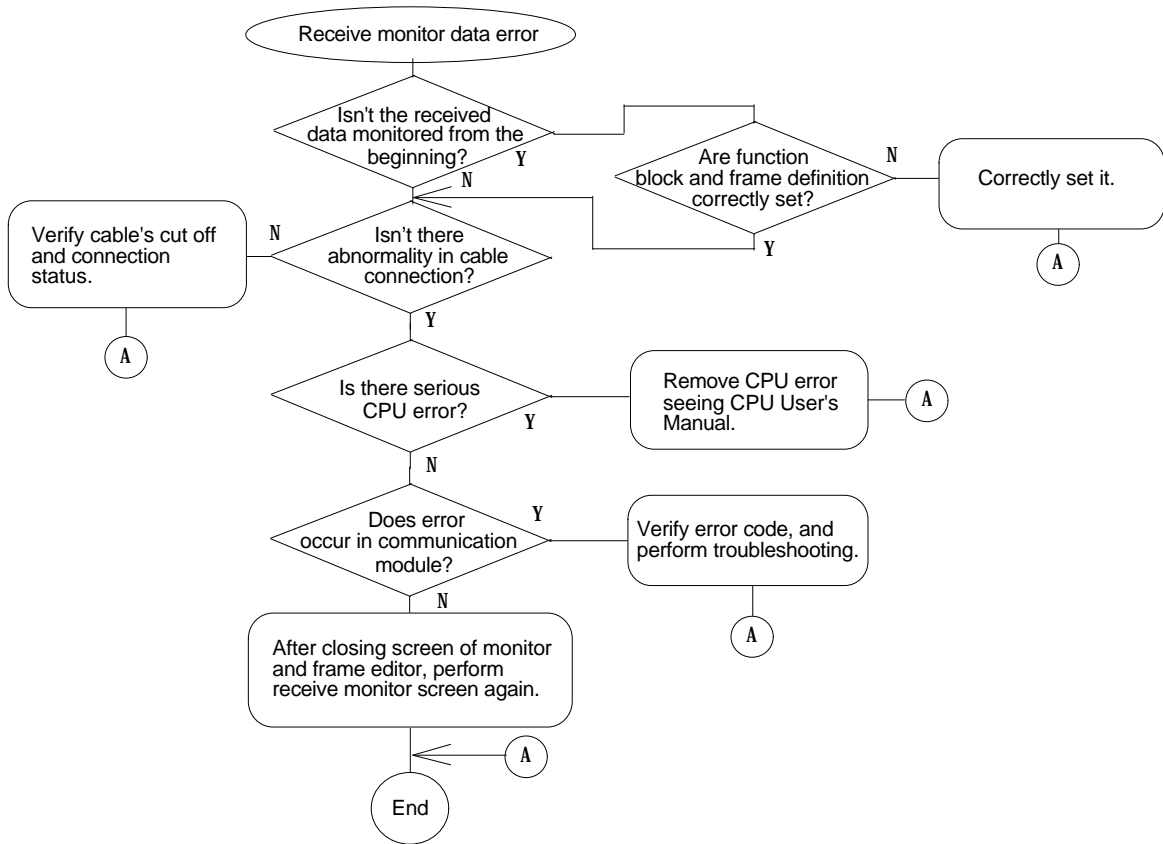


9. Troubleshooting

9.2.2 Error code C02-01 : Function block error

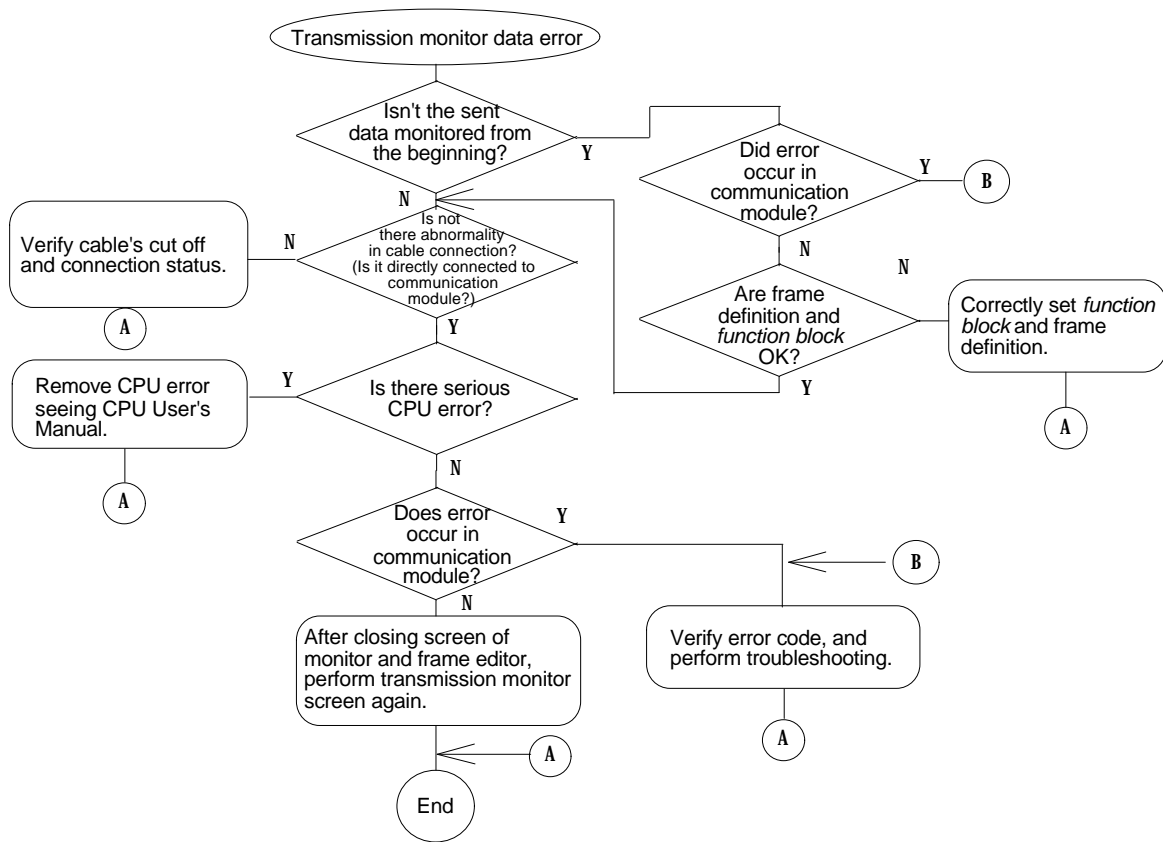


9.2.3 Error code C03-01, C03-02 : Receive monitor data error

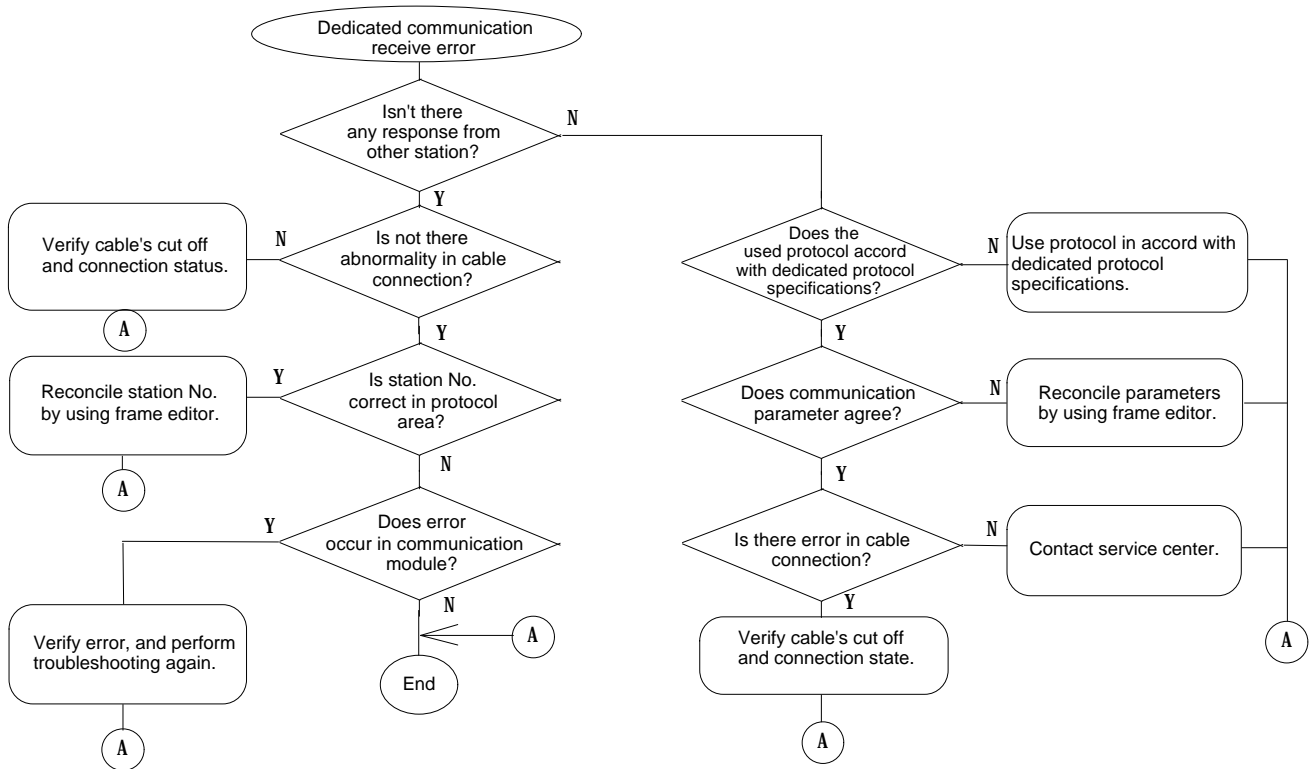


9. Troubleshooting

9.2.4 Error code C04-01, C04-02 : Transmission monitor data error



9.2.5 Error code C05, C06 : Error during dedicated communication



9. Troubleshooting

9.2.6 Error code C07 : Modem connection error during GMWIN communication

