

## Chapter 7. TROUBLESHOOTING

The following explains troubles and corrections when using the High Speed Counter Module.

For troubleshooting relating to the CPU module, refer to the CPU module user's manual.

### 7.1 Troubleshooting

#### 7.1.1 The LED status of High Speed Counter Module

RDY LED is turned off



See Section 7.2.1

#### 7.1.2 The counting status of High Speed Counter Module

No changes of count value



See Section 7.2.2

Changes of count value do not conform to the operation status.



See Section 7.2.3

#### 7.1.3 The output status of High Speed Counter Module

Output operations do not execute.

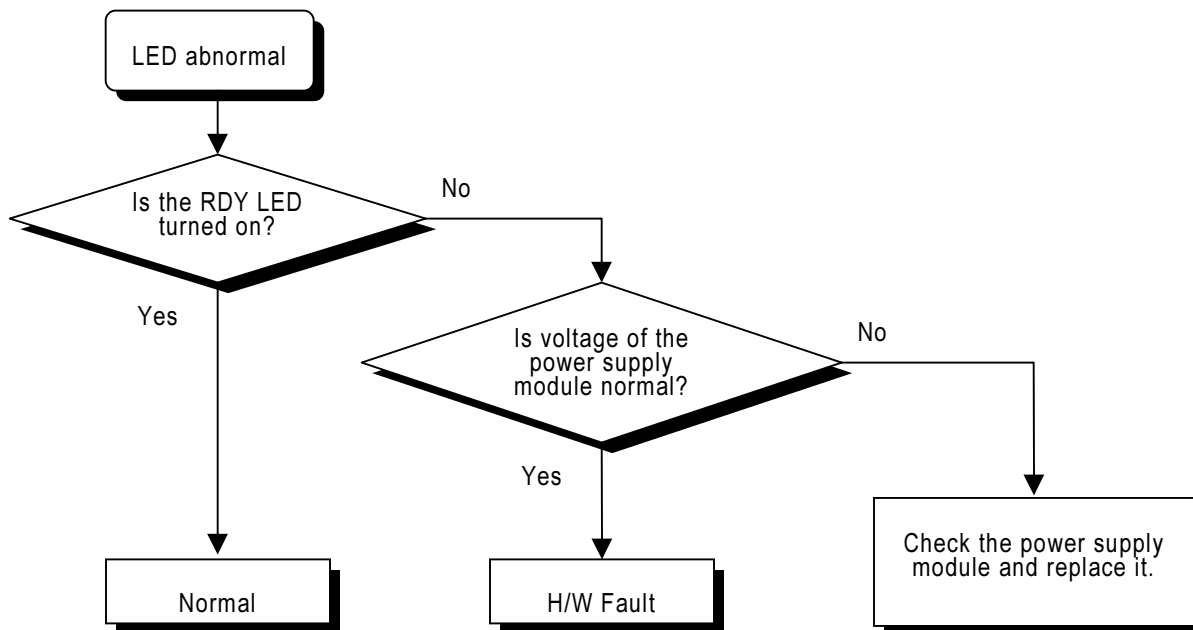


See Section 7.2.4

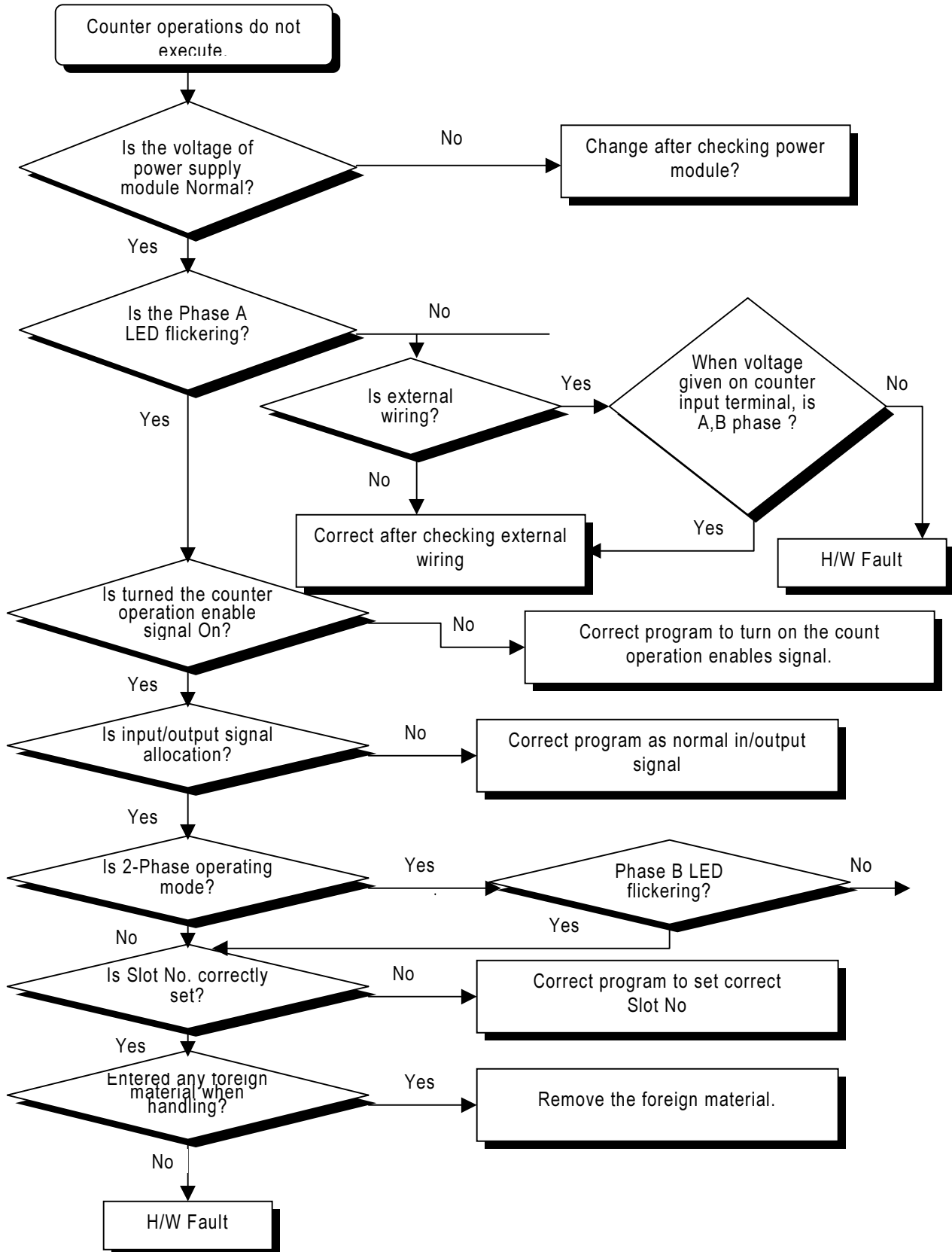
Output operations do not conform to the operation status.

7.2 Troubleshooting Procedure

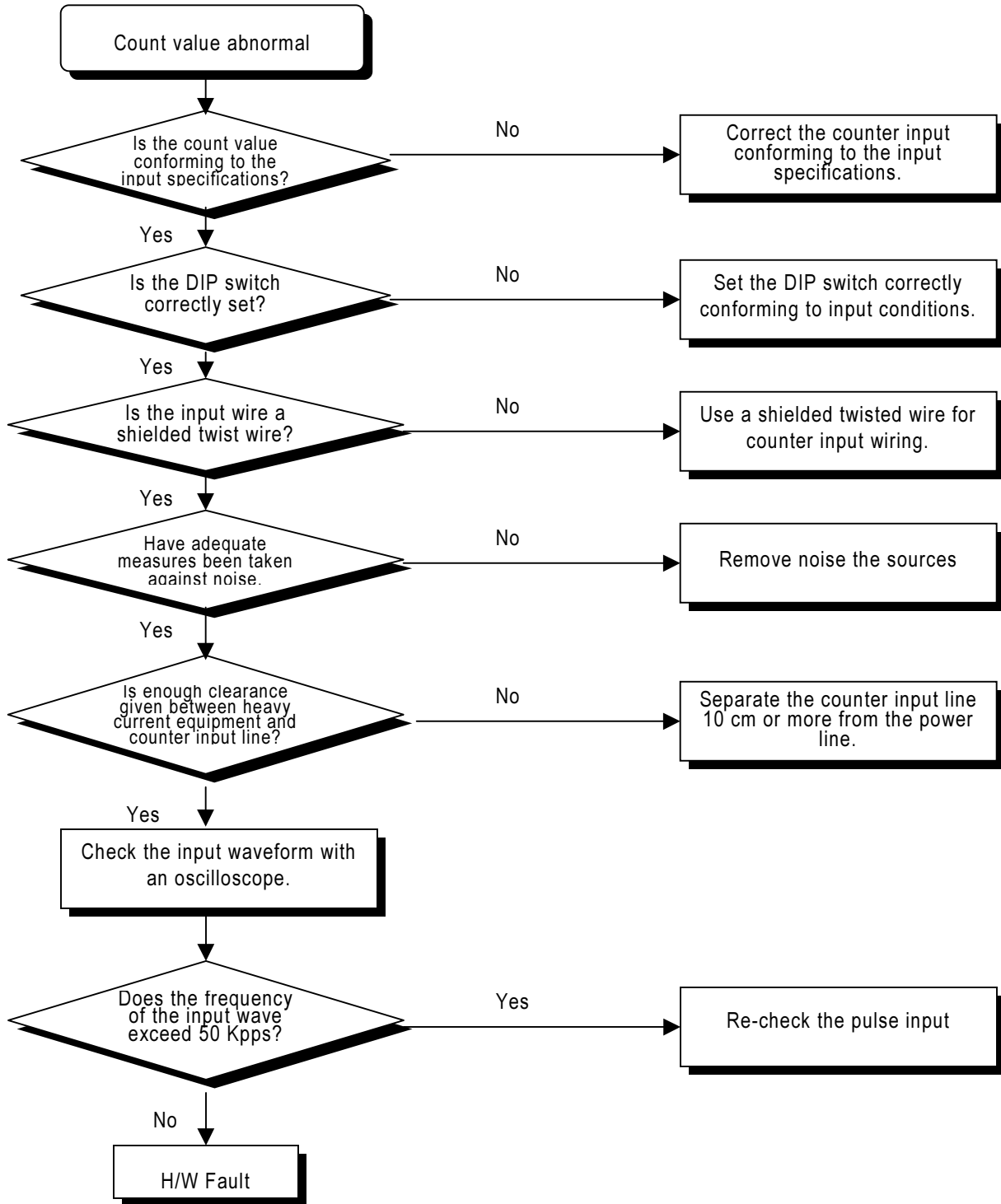
7.2.1 LED Indication Is Incorrect



7.2.2 Counter Operations Do Not Execute.



7.2.3 Count Value Is Incorrect



7.2.4 Output Operations Do Not Execute

