

Chapter 2 Installation

2.1 System Requirements for GMWIN	2-1
2.2 GMWIN Installation	2-2

Chapter 2 Installation

2.1 System Requirements for GMWIN

Hardware and Software requirements for GMWIN are as below.

- 1) Personal computer and its memory capacity
 - Personal computer (80386 / 80486 CPU or above)
 - A minimum of 4 MB memory including extended memory.

- 2) Serial Port
 - More than 2 serial port.

- 3) Hard disk
 - 20 Mb Hard disk space

- 4) Resolution for Graphic Card
 - Minimum 800 x 600 pixels or above

- 5) Floppy disk
 - One floppy disk driver.

- 6) Mouse
 - A windows 3.1/95 compatible mouse.

- 7) Printer
 - A windows 3.1/95 compatible printer.

- 8) MS-DOS
 - An MS-DOS operating system for operating Windows 3.1.

- 9) Windows 3.1/95

2.2 GMWIN Installation

Note

Installation program for GMWIN is compressed in floppy diskettes. So if you just copy all the programs in each floppy diskettes onto your hard disk, you cannot run GMWIN.

To install GMWIN in your computer, Use installation program (SETUP.EXE) in "disk 1".

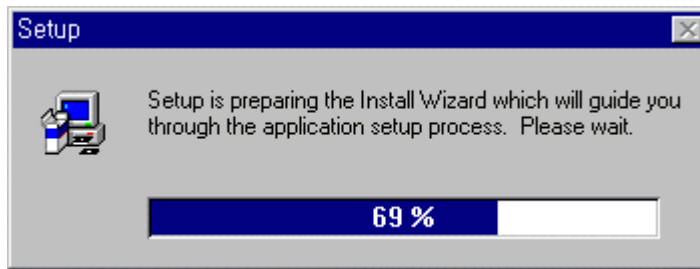
2.2.1 Installing Program

To install GMWIN for Windows, you must run an installation program(SETUP.EXE) in "disk 1" on Windows 3.1/95.

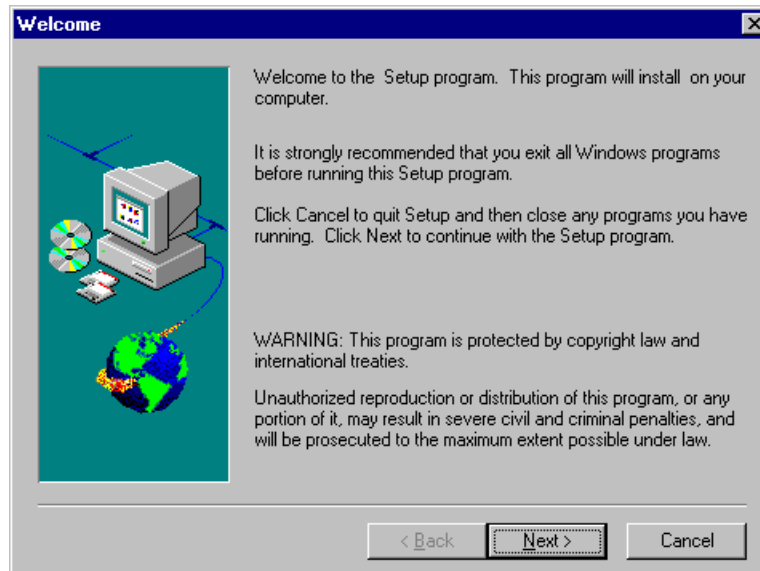
- Confirm that "disk 1" is inserted into your floppy disk driver.
- Click on the **File menu** in Program Manager.



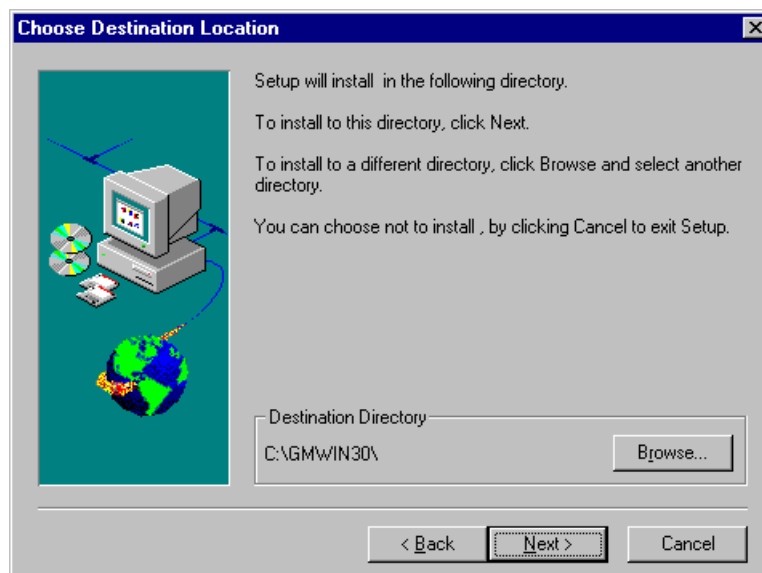
- Select the **Run** command and run the **setup.exe** in disk 1.
- Click **OK** button. Then the setup wizard will guide you to install the program.



- The above dialog box of welcoming message appears in your screen.



- Click the **Next** button to continue the installation.

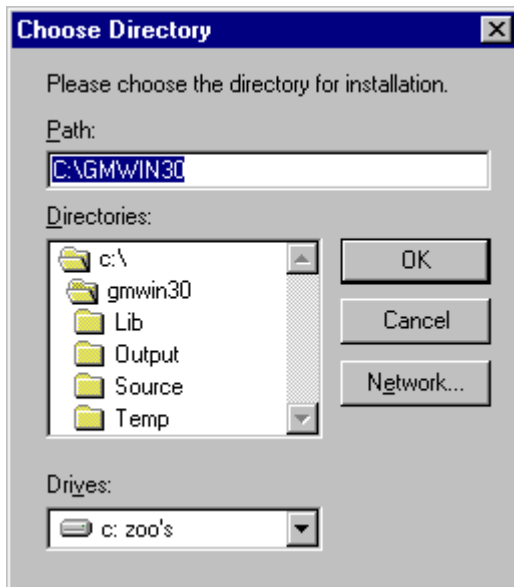


- **Select Destination Directory.**

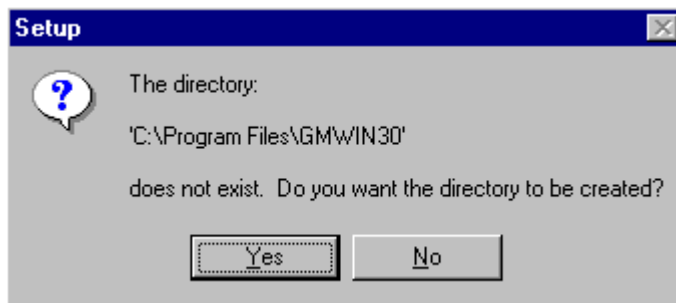
If you want to change the installing directory, click the **Browse...** button.

You may cancel the installation by clicking the **Cancel** button in dialog box at anytime.

- If you click the **Browse...** button in the dialog box, **Choose Directory** dialog box appears.

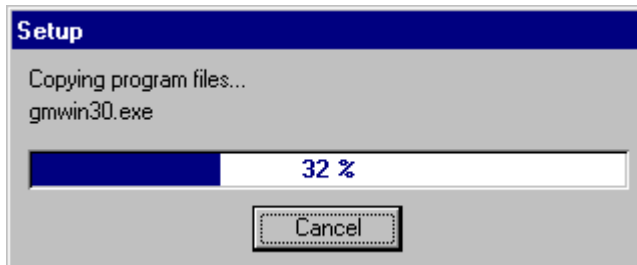


- Choose the destination path in the dialog box or enter the path name in the text box and click **OK** button.
- If the entered path name does not exist, the dialog box appears as below.

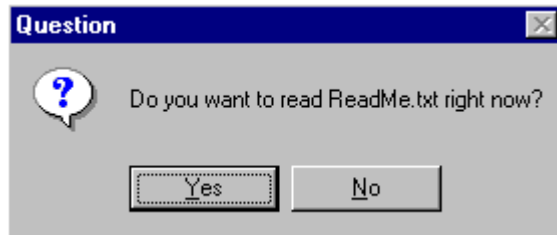


If you would like to create the path, click **Yes** button.

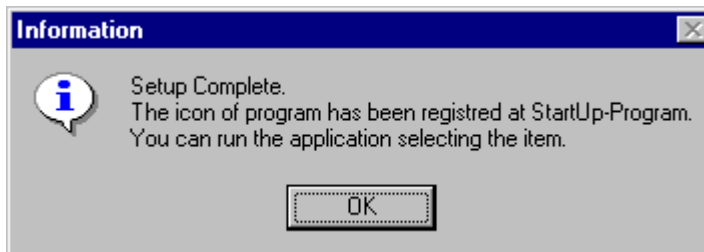
- If you finish selecting installation path, click the **Next** button.
- Files in the floppy disk will be copied onto your hard disk.



- When copy is completed, the setup wizard asks whether you read ReadMe.txt file or not.



- The icon for GMWIN will be registered at the **Start-Up Program**.
Click **OK** button to finish the installation.



Note

Installation at windows 3.1 is exactly same as the above process.
When GMWIN is completely installed, WIN32s will be installed automatically.
Find the GMWIN folder in the windows and run GMWIN.